

PEDALBOARD SYSTEMS

Road Cases for Today's Musician

The NGM Standard Pedalboard Road Case

- PEDALBOARDS
- AMP/SPEAKER CASES
- CUSTOM ORDERS
- COMPANY HISTORY
- ORDER/CONTACT



Price Cut
NGM Standard Pedalboard
Now only \$249.99

The NGM Standard is our main production model. This ingenious multilevel Pedalboard Roadcase is a extremely functional tool for today's musician. The two level design lets you put more effects in less space and makes it easier to access effects. The 2 level design also allows for popular pedal power systems to hide underneath the upper level, keeping your pedal power safe and out of harms way. The lid is completely removable and is attached to the Pedalboard by 4 recessed latches. The lid is also lined with foam so that your effects will stay in place and have a gentle ride in transport. On the road, NGM Pedalboards give your effects ATA-flight approved protection and a consistent and reliable set up.

NOT JUST A CASE...NGM PEDALBOARDS GIVE GUITARISTS MORE FEATURES!



removeable upper level



hinged dual storage area



many cord routing holes



storage compartment side exit for main power cords



2 level foam protection in lid

The NGM Standard boasts 30"X 14" of total effect pedal space and a 4"X4" dual storage compartment. The NGM Standard also comes with a upper level to elevate the back row of effects. The bottom and upper level are carpeted so your effect pedals "stick" anywhere you want them with a little help from some male Velcro. Throughout the board, there are many ways to route cords and cables. The Upper level is removable and moveable so you can raise it up to route your cables. This also allows for other size upper levels or split upper levels

The normal size upper level would be 24"X7" as seen here. It allows for 1 long oversize effect like a wah or volume pedal (this one has a wah plate). If you have more oversize

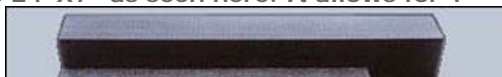


plate). If you have more oversize effects you would need a shorter upper level. If you use the tried and true wah/vol combination, the upper level would need to be 20"X 7". If you need more upper level width than 7" let us know. Also, the upper level is tall enough to hide the popular pedal power systems available (voodoo labs, dunlop juice etc...). This keeps all of your power connections safe, out of the way and lets you hide the connection cables.



Whatever combination of pedals you have the NGM Standard can handle it!

Hint.....take a few minutes and cut out a piece of newspaper that's 30"X14" to see if its enough room for all of your effects. Then arrange your effects in two rows to determine what size upper level you need. If it's too big or not enough room for all of your effects set-up see [Custom Orders](#).

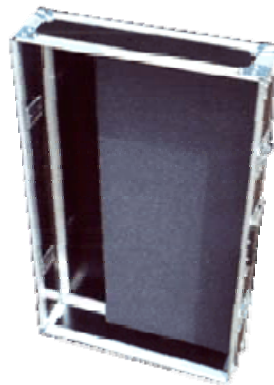
NGM STANDARD WITH WAH PLATE

The NGM Standard also comes with a dual storage compartment. The large area lets you drop a typical 6 outlet surge protector which can be conveniently routed out of the side of the storage compartment so that you can connect a extension cord and easily power your board in a snap. The small storage area is great for all accessories so you don't



have to lug around an extra bag full of essential gear. The hinged lid protects your power from over zealous front row drinkers and keeps all of your in place during transport.

Just unlatch, plug in and play!



NGM PEDALBOARDS
2819 Pease St.
Houston, TX 77003

ngmps@ev1.net

© Copyright 2004. NGM PEDALBOARD SYSTEMS.

Website hosting and design by Comserv and Emerge.

