

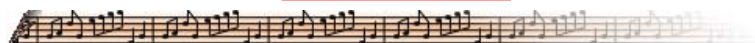
K&S Guitar Co., 2923 Adeline St. Berkeley, CA. 94703

K&S Guitar Co.



K&S Guitar Co.

AS OF JANUARY 1, 1999 K&S HAS SPLIT UP INTO TWO COMPANIES



JORGE KATECHIS MONTALVO (the "K" of K&S) IS AT

<http://web.archive.org/web/19990225132330/http://www.berkeleymusic.com/>

MARC SILBER (the "S" of K&S) IS AT

<http://web.archive.org/web/19990225132330/http://www.marcsilbermusic.com/>



Flamenco and Classical guitars, Steel String, and Acoustic
Hawaiian lap steel guitars, Steel String, Flamenco and
Classical guitars.

● [Berkeley Musical Instrument Exchange](#)

● [Marc Silber Music](#)

K&S Guitar Co.



[1/14/99]